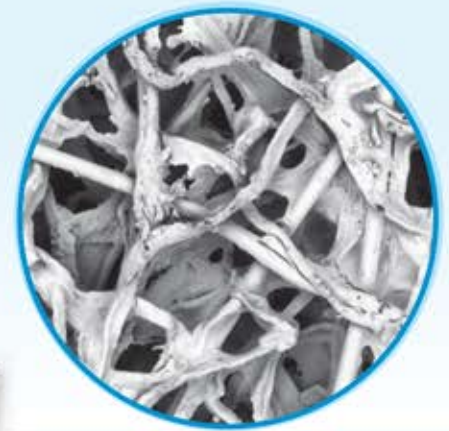


# ICF-12M

70/30 Polyester and Cellulose

ICF-12M is a blended Polyester/Cellulose premium filter media with a non-phenolic resin system. One of the highest moisture resistant media's on the market, great cake release and great media strength.



|                  |                                 |
|------------------|---------------------------------|
| Basis Weight     | 90lbs/3000 ft <sup>2</sup>      |
| Caliper          | 27 mils @ 2.7 psi               |
| Air Permeability | 27 cfm/ft <sup>2</sup> @ 0.5 wc |
| Resin Content    | 18 %                            |
| Mullen Burst Dry | 70 psi                          |
| Mullen Burst Wet | 75 psi                          |
| Resin System     | Non-Phenolic                    |

## Test Results

|   |         |
|---|---------|
| Airflow Rate (CFM)                      | 500     |
| Initial Resistance (in WG)              | 0.93    |
| E1 (%) Initial Efficiency 0.30 - 1.0 μm | 50      |
| E2 (%) Initial Efficiency 1.0 - 3.0 μm  | 76      |
| E3 (%) Initial Efficiency 3.0 - 10.0 μm | 99      |
| MERV*                                   | MERV 12 |

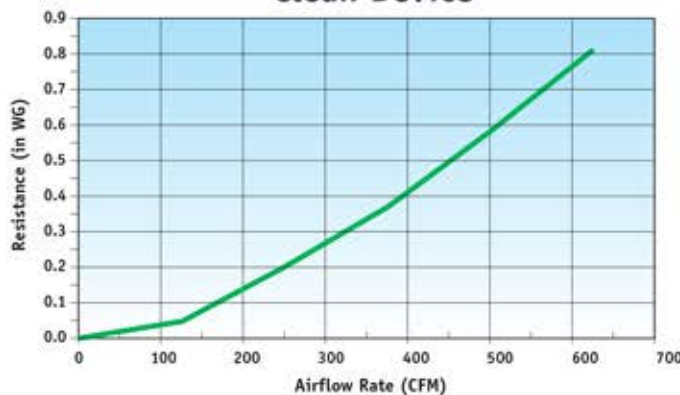
\* Minimum Efficiency Reporting Value based on ASHRAE Test Standard 52.2-2007.



## Typical Applications

- Abrasive Shot Blasting
- Battery Recycling
- Dry Chemical Processing
- Metal Grinding
- Mining
- Powder Paint

### Air Flow vs Resistance Clean Device



### Initial Particle Size Removal Efficiency

